



# APPLICATION NOTE

This information provided by Automationdirect.com Technical Support Team is provided "as is" without a guarantee of any kind. This document is provided to offer assistance in using our products. We do not guarantee that the contents are suitable for your particular application, nor do we assume any responsibility for applying the contents to your application.

**Product:** DataWorx  
**Subject:** Do-more PLC support

**Number:** AN-DW-001  
**Date Issued:** 12/10/13  
**Revision:** Original

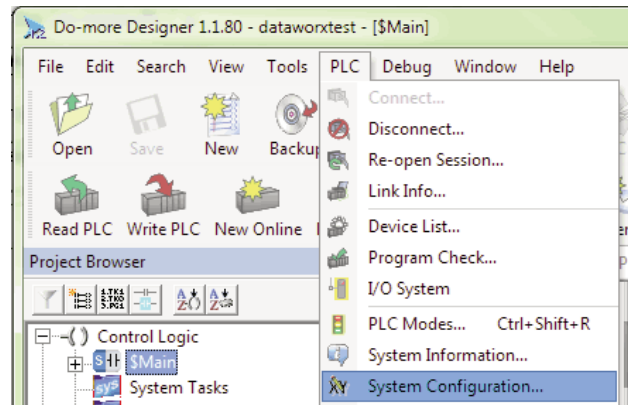
DataWorx now has direct support for the Do-more PLC and this application note contains instructions on how to configure DataWorx for the Do-more PLC.

**NOTE: You will need DataWorx version 2.2 build 99 or higher and a Do-more CPU with a built-in Ethernet port for this exercise.**

In Do-more Designer, first create a UDP device that will be used in the PACKETOUT instruction.

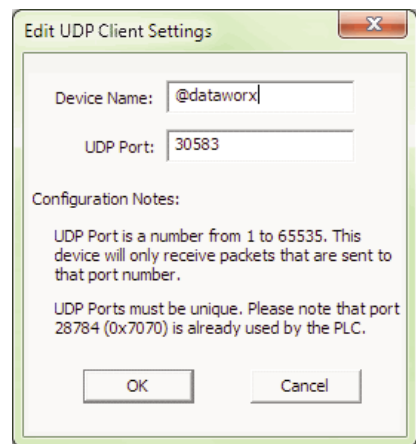
**NOTE: Ensure you have assigned an IP address to the Do-more CPU either in NetEdit or under System Information in Do-more Designer.**

1) Click on PLC from the menu bar > then click on System Configuration.

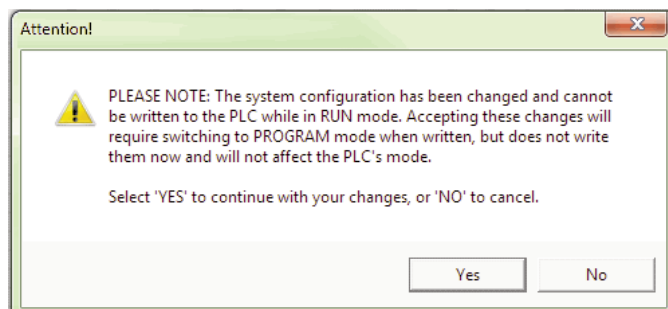


2) Now select Device Configuration > then New Device.

3) In the Device name field enter '@dataworx', and in the UDP port field enter '30583' > then hit ok > then hit ok once again to close out the configuration window.



4) Select 'Yes' to the pop up window.





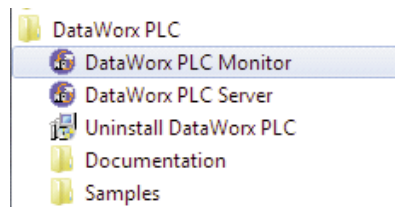
# APPLICATION NOTE

- 5) Next, on a empty rung enter a 'PACKETOUT' Instruction and fill in the fields with the below information:
  - a. **Device:** Select the newly created '@dataworx' device.
  - b. **IP Address:** Select Fixed and enter the IP Address of the PC running DataWorx.
  - c. **To UDP Port Number:** Enter '30583' (port number DataWorx is listening to).
  - d. **Data Start:** Select Numeric Data Block and enter: (These will match our DataWorx setup in a later step)
    - i. Buffer Start = V0
    - ii. Number of Bytes to Output = 8 (This will match our DataWorx setup in a later step)
  - e. **On Success:** Leave as default or select an unused C bit.
  - f. **On Error:** Leave as default or select an unused C bit.
  
- 6) Select the green checkmark to accept your selections.
  
- 7) Now for the input leg to the PACKETOUT instruction enter a Normally Open contact (F2) and assign an input or bool bit.
  
- 8) Accept and Download this project to the Do-more CPU.



## These next steps focus on configuring DataWorx:

- 9) Open DataWorx PLC Monitor.



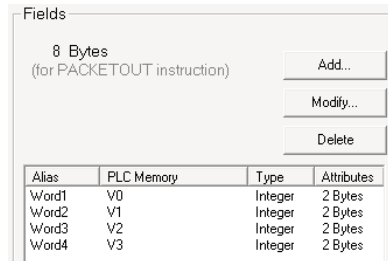
- 10) Now click on Options > Configure Server > then Add.

- 11) Use DataWorx to setup the PLC Configuration:
  - a. **IP Address:** enter IP Address of your Do-more CPU.
  - b. **Data Directory:** Select a directory in which you would like the .csv file stored.
  - c. **PLC Configuration:** Enter 'V0'.
  - d. **Do-more PLC:** Check this box.

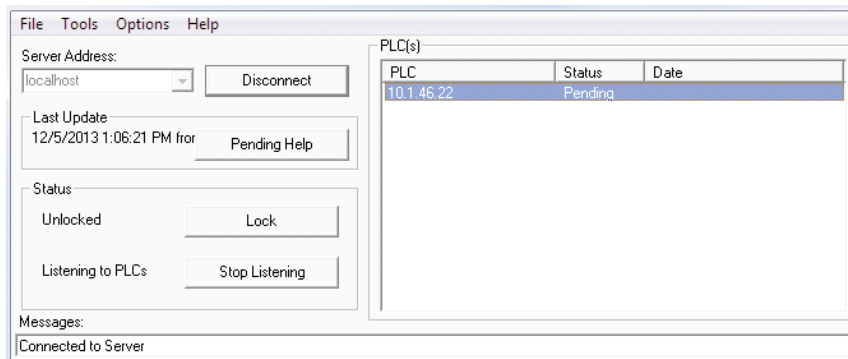


# APPLICATION NOTE

12) Select Add and enter four (Integer) 2-byte words starting with V0.

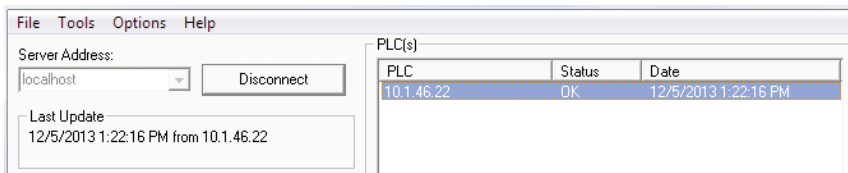


13) Select OK to finish the configuration. The DataWorx PLC Monitor should now look similar to the following.



14) Now trigger the input rung to the PACKETOUT instruction in the Do-more PLC.

15) You should get the below update in the DataWorx PLC Monitor window:



16) Now open the excel .csv file in the Data Directory we set up in step 11 b. and verify the data was written.

**Technical Assistance**

If you have any questions regarding this Application Note, please contact Technical Support at 770-844-4200.