

ETHERNET PLC/WINPLC DATA COLLECTION

New DataWorx software: Connect Ethernet enabled PLCs for easy data collection at an affordable price

What is it?

The new DataWorx Software package easily connects your Ethernet enabled *Direct*LOGIC PLCs, or Entivity Studio or Think&Do Live! WinPLCs to stand-alone PCs or network servers for simple data logging. This means that any PC or server on the network can collect valuable PLC/WinPLC data without the need for special PC programming or any 3rd party HMI, SCADA, or DAQ software application. DataWorx is easy to set up and use, and is priced right. Without a doubt, DataWorx will save you both time and money.

How do I use it?

Simply install the DataWorx software on a PC or file server on the same targeted Ethernet PLC network. Next, enable the PLC logic to write data to your choice of delimited text files onto the networked PCs or a file server.

Benefits of DataWorx

- Easy setup, no programming necessary
- No SCADA software required
- No dedicated PC required
- Stores unlimited amounts of data
- Monitors unlimited number of *Direct*LOGIC PLCs, or Entivity Studio or Think&Do Live! WinPLCs
- *Direct*LOGIC PLCs, or Entivity Studio or Think&Do Live! WinPLCs have complete control of storing the data

Applications

- Log valuable production data to networked PCs or file servers for Statistical Process Control decision making.
- Archive test data in a secure server file location with built-in date/time stamping features to satisfy quality assurance or audit trailing procedures.
- Use in data acquisition applications as source content for historical trending to be used by other ERP or other higher level business system applications.

Product line-up:

DataWorx PLC Software

Support for one *Direct*LOGIC PLC (with HX-ECOM module installed)
PC-DATPLC-1

Support up to three *Direct*LOGIC PLCs (with HX-ECOM modules installed)
PC-DATPLC-3

Support up to seven *Direct*LOGIC PLCs (with HX-ECOM modules installed)
PC-DATPLC-7

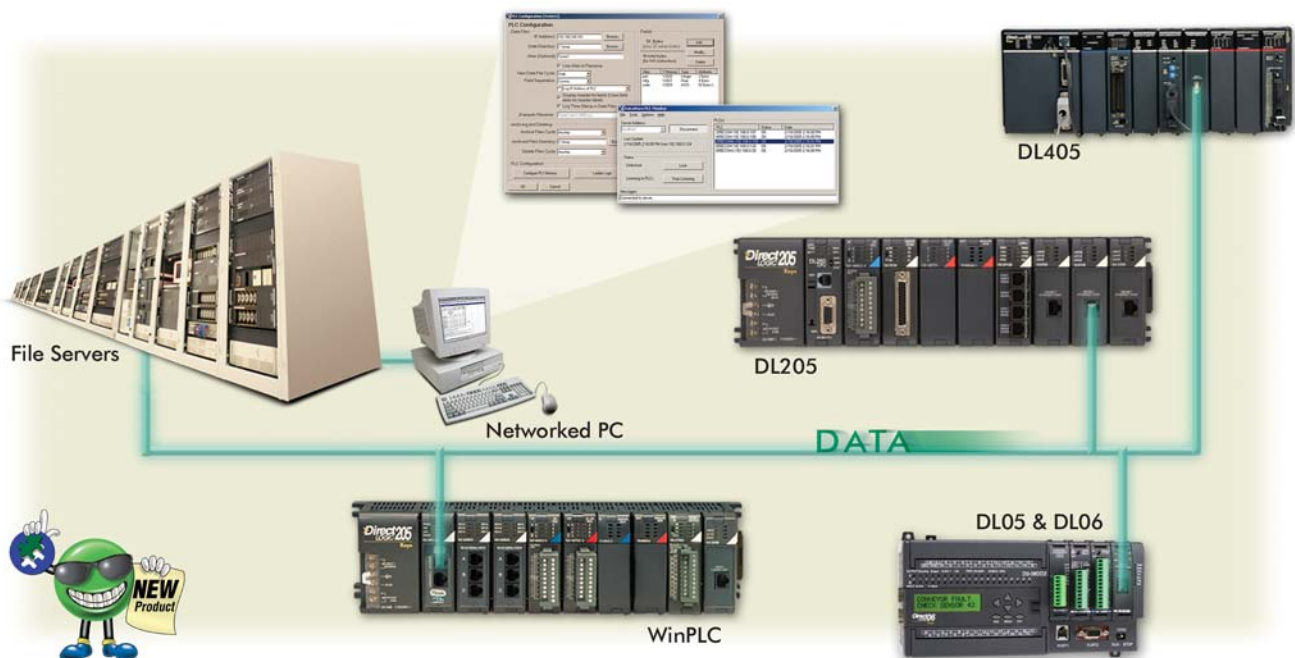
Support unlimited *Direct*LOGIC PLCs (with HX-ECOM modules installed)
PC-DATPLC-UN

DataWorx WinPLC Software

Support for one Entivity Studio or Think&Do Live! WinPLC
PC-DATWINPLC-1

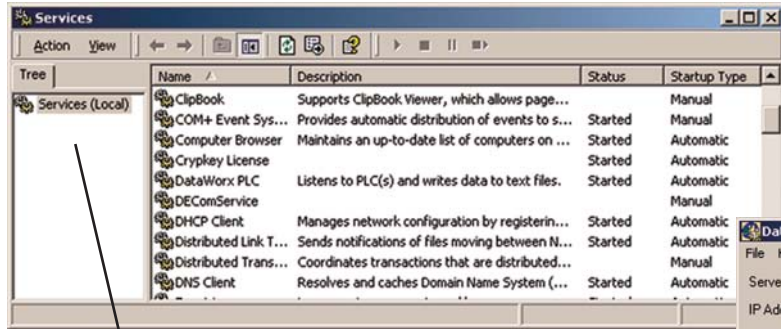
Support up to three Entivity Studio or Think&Do Live! WinPLCs
PC-DATWINPLC-3

Support up to seven Entivity Studio or Think&Do Live! WinPLCs



DATAWORX PLC/WINPLC SERVER

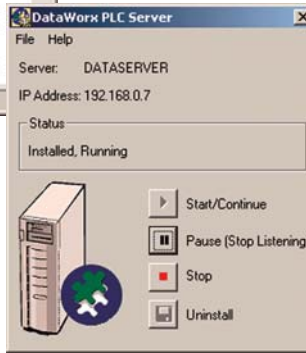
The DataWorx software packages include a Server application that runs as a Microsoft Windows “service”. Running as a service means the DataWorx program runs regardless if anyone is presently logged-in on the PC or not. Another advantage of the Server running as a service is that the user does not need to manually start the logging every time the computer restarts. The application “listens” for information from the PLC/WinPLC and logs the data into a file configured from the Monitoring application. The Server is capable of collecting an unlimited amount of data from an unlimited number of PLCs/WinPLCs.



Identifies the various services that are part of the PC.

Running as an NT Service

DataWorx is equipped with an easy-to-use graphical interface to start, stop, or pause services. It also provides a very simple way to install or uninstall the service.

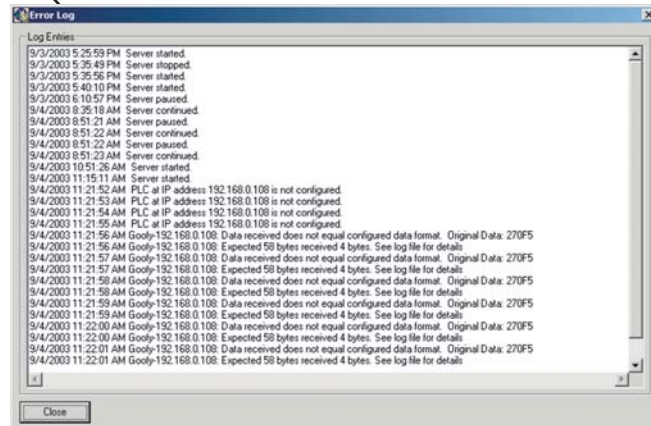


Graphical Interface to control the services.

Diagnostic Error Logging.

Error Log

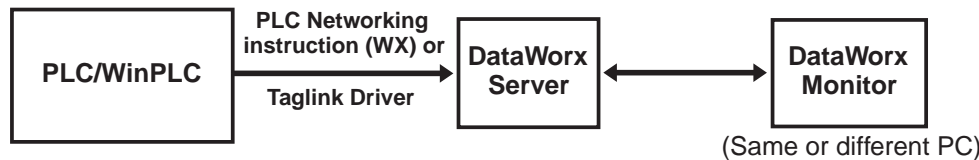
The Server has a useful Diagnostic Error Log window to help with troubleshooting the Server if a problem arises. The Error Log shows the status of the Server. The Error Log indicates whether the Server is started, stopped, or paused, and if the data received from the PLC/WinPLC matches the data configured in the Server.



SOFTWARE

RBE (Report by Exception) Technology

RBE technology is what makes DataWorx software unique. It is a special way of gathering data rather than the usual data collection through polling PLCs/WinPLCs. RBE technology makes the Server “listen” for data that has changed before it stores the information. The PLC/WinPLC sends data ONLY when needed. The common method of collecting data by continuous polling adds a lot of network traffic, causes the CPU utilization to dramatically increase, and in most applications, requires a dedicated PC. In contrast, the RBE method gives the PLC/WinPLC complete control to store data to a networked PC or file server hard drive and store the data locally if the network is down.



DATAWORX PLC/WINPLC MONITOR

The Monitor application included in the DataWorx package configures the Server's file creation cycle, and PLC/WinPLC listings. The Monitor also allows the user to view or save the data files stored on the Server. Files can be opened and viewed in Notepad, Excel, or another chosen program. The user may select to create files on a daily, monthly, or yearly basis. The Monitor application is able to conveniently run from any PC that is networked with the Server.

Configuration

Using the Monitor application, users can configure the Server to log data to the Server's hard drive in a comma or tab delimited text file. Users can also include a date and time stamp in the file, and an alias for each data item sent. The alias can be used as the file's header.

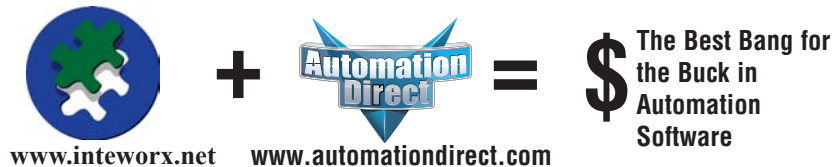
Archiving

The Server can be configured to archive the log files into a zip file and copied to an archive directory for easy management. In the directory, files can be deleted automatically according to the parameters set by the user. Archiving can occur daily, monthly, or yearly as needed.

DATAWORX PLC/WINPLC DATA COLLECTION

AutomationDirect joins INTEWORX.NET to offer exceptional data collection software

AUTOMATIONDIRECT has teamed up with INTEWORX.NET to offer its customers DataWorx data-collection software for AUTOMATIONDIRECT Ethernet compatible *Direct*LOGIC PLCs and Entivity Studio or Think&Do Live! WinPLCs. Before DataWorx, it was necessary to purchase an OPC/DDE server, write code or buy an HMI package to program, in order to collect data from AUTOMATIONDIRECT PLCs/WinPLCs. Now DataWorx makes it simple and cost effective to collect valuable data to enable you to make better business decisions. INTEWORX.NET is a company that specializes in data collection. INTEWORX.NET offers software products, and a variety of engineering services to assist manufacturers and utilities to automate, monitor, and collect data from their processes through the most productive and cost-effective means possible.



System requirements

DataWorx PLC requirements:

The PC hardware requirements for DataWorx PLC include a Pentium II with 128 megabytes of RAM and at least 10 megabytes of hard disk space free. The Server application can run on Windows NT, 2000 or XP. The Monitor application can run on Windows 98, NT, 2000 or XP.

AUTOMATIONDIRECT PLCs: H2-ECOM(-F), H4-ECOM(-F) or H0-ECOM.

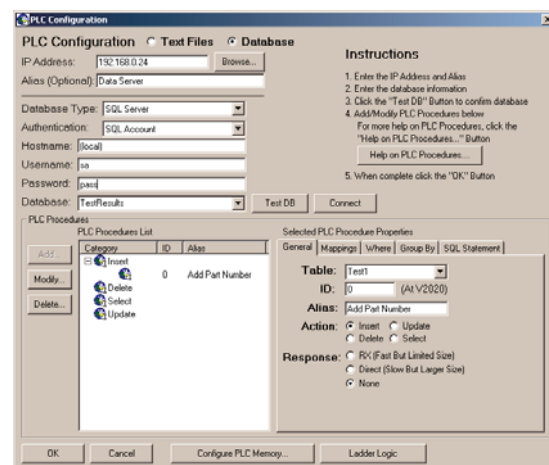
DataWorx WinPLC requirements:

The PC hardware requirements for DataWorx WinPLC include a Pentium II with 128 megabytes of RAM and at least 10 megabytes of hard disk space free. The Server application can run on Windows NT, 2000 or XP. The Monitor application can run on Windows 98, NT, 2000 or XP.

AUTOMATIONDIRECT Entivity Studio and Think&Do Live! WinPLCs: H2-WPLC2-EN or H2-WPLC3-EN

INTEWORX.NET introduces DataWorx PLC Professional – New DataWorx software provides database access to collected data

DataWorx PLC *Professional* is an additional product offered by INTEWORX.NET that collects data for AUTOMATIONDIRECT *Direct*LOGIC PLCs, or Entivity Studio or Think&Do Live! WinPLCs with the added feature of being able to store information into a database using SQL statements. The user can perform database operations such as storing PLC/WinPLC data and returning queries to the PLC/WinPLC. The user may configure database connectivity and operations in an easy to use GUI (as shown). Currently DataWorx PLC *Professional* supports Access and Microsoft SQL Server. DataWorx PLC *Professional* is available through INTEWORX.NET. For more information, visit www.inteworx.net or call 770-886-6166.



DATAlynx: REMOTE DATA COLLECTION SOFTWARE

New DataLynx Software-Remote Data Collection Made Easy

What is it?

DataLynx data-collection software is an inexpensive data logging and storage package for PLCs using a PC. Any PLC or other device that supports MODBUS, along with a modem connection works well with DataLynx. This software package is an ideal solution for collecting data from remote locations or relaying data from multiple locations back to a single location to be stored.

DataLynx polls remote MODBUS-enabled devices over standard phone lines using off-the-shelf modems. The DataLynx Server runs as a service and collects and stores your data into comma or tab-delimited file formats. DataLynx can also be configured to automatically archive data files into a .zip file every month or year and delete the files as well.

How Do I Use It?

DataLynx is an easy software to install and use. No additional programming by the user is necessary. Simply install the DataLynx software on a PC or file server and configure the remote MODBUS-enabled device phone number and memory address.

Benefits of DataLynx

- Easy setup, no programming necessary
- No SCADA system required
- Collect data from remote locations
- Stores unlimited amounts of data
- Monitors unlimited number of PLCs or MODBUS devices
- Troubleshoot instantly

DataLynx, DataWorx Comparison	
DataLynx	DataWorx
• MODBUS / modem	• Ethernet
• Polling (dials & polls)	• Report-by-exception
• No PLC programming	• Uses PLC RX/WX
• No third-party programming software required	

Applications

- Log important data from remote processes using a standard phone line where Ethernet connections are unavailable.
- Monitor process data in other states and cities for trending history.
- Collect process history from machines in multiple locations for preventative maintenance and historical usage.

Product Lineup:

DataLynx Software

Support up to one PLC PC-DATLYNX-1	\$395.00
Support up to five PLCs PC-DATLYNX-5	\$795.00
Support up to ten PLCs PC-DATLYNX-10	\$1,295.00
Support unlimited PLCs PC-DATLYNX-UN	\$1,495.00

